

CBDA All State Scales Set C

High School

**B $\flat$  BASS CLARINET**

**D Major** ♩ = 96



**B Melodic Minor** ♩ = 96



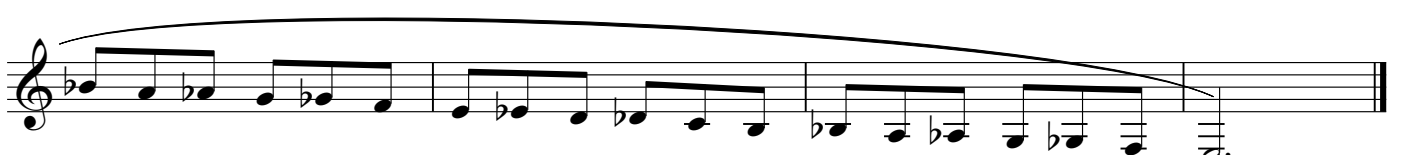
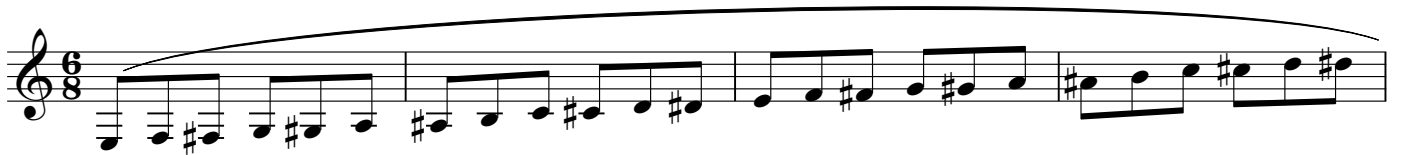
**G $\flat$  Major** ♩ = 96



**E $\flat$  Melodic Minor** ♩ = 96



**Chromatic** ♩ = 96



\*\*Tempos for scales may be taken faster as long as it demonstrates accuracy and fluency.\*\*